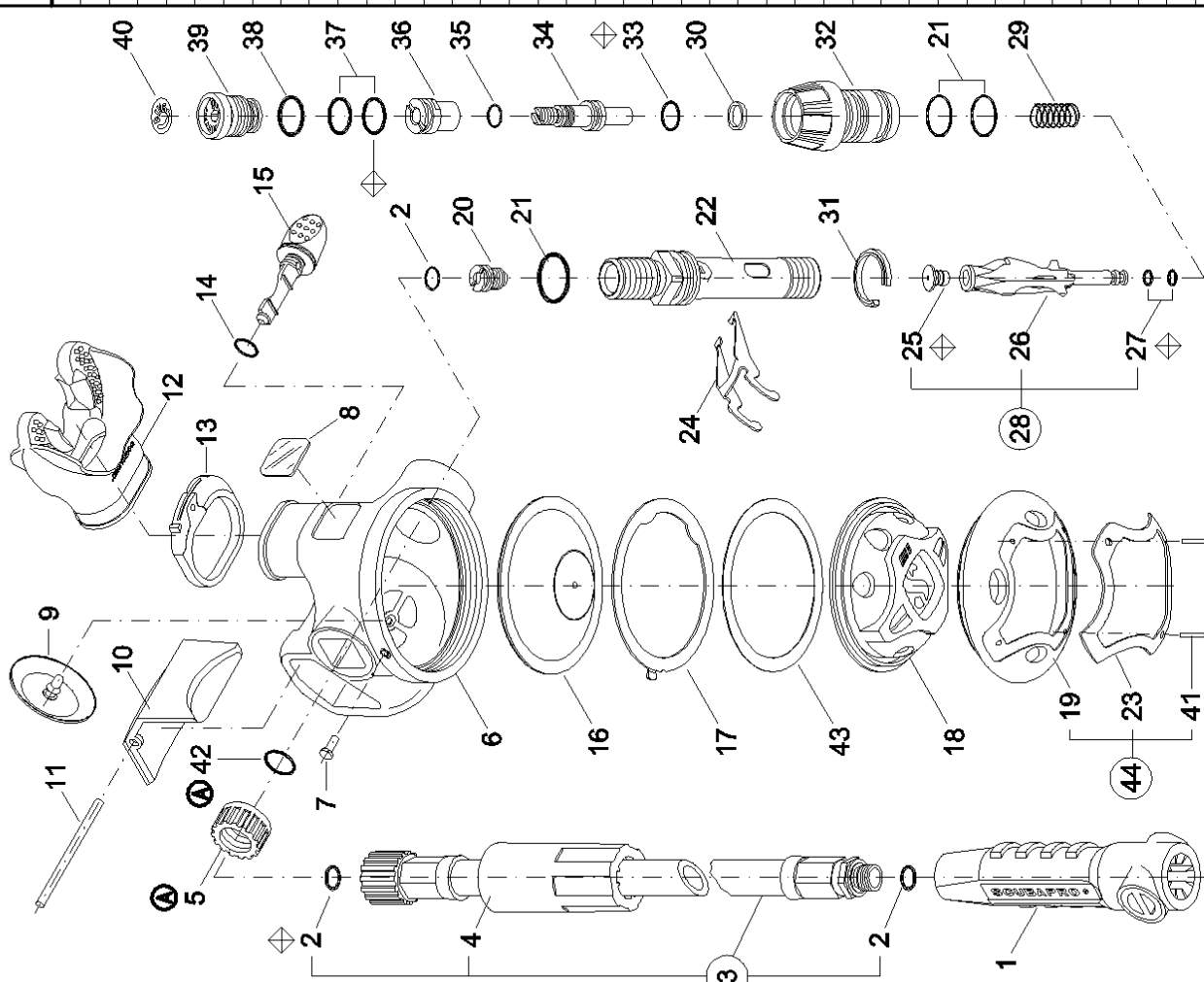


| Po. | P/N | DESCRIPTION | DESCRIZIONE | DESCRIPTION | DESCRIPTION | BEZEICHNUNG |
|-----|----------|-----------------------|---------------------|----------------------|----------------------|-----------------------|
| 1 | 11029100 | PROTECTIVE SLEEVE | TUBO PROTEZIONE | PROTECTEUR TUYAU | PROTECTEUR TUYAU | Knickschutz |
| 2 | 01050132 | O-RING | O-RING | O-RING | JOINT TORIQUE | O-Ring |
| 3 | 01309030 | L.P. HOSE cm. 75 | TUBO B.P. cm. 75 | TUYAU M.P. cm. 75 | TUYAU M.P. cm. 75 | ND-Schlauch 75 cm. |
| 4 | 11600040 | SLEEVE HOSE | MANICOTTO | MANCHON TUYAU | MANCHON TUYAU | Schlauchschutz |
| 5 | 11755120 | NUT, JAM UNIF. | GHIERA SEDE UNIF. | ECROU MOLETTE | ECROU MOLETTE | Mutter |
| 6 | 11600006 | CASE | CASSA | BOITIER | BOITIER | Gehäuse |
| 7 | 01075131 | PIN, CASE | PERNO CASSA | PIVOT BOITIER | PIVOT BOITIER | Nagel |
| 8 | 01006883 | DECAL V.I.V.A. | DECAL V.I.V.A. | DECAL V.I.V.A. | DECAL V.I.V.A. | Signet V.I.V.A. |
| 9 | 11250103 | EXHAUST VALVE | VALVOLA SCARICO | SOUPAPE D'EXPIR. | SOUPAPE D'EXPIR. | Auslasskappe |
| 10 | 11600007 | COVER EXHAUST | PORTELLO SCAR. | COUVER. DE SOUP. | COUVER. DE SOUP. | Ventilkappe |
| 11 | 11190106 | PIN | SPINA | CLAVETTE | CLAVETTE | Sicherungsstift |
| 12 | 01040141 | MOUTHPIECE | BOCCAGLIO | EMBOUIT | EMBOUIT | Mundstück |
| 13 | 01040024 | CLIP, QUICK REMOV. | FASCETTA SG. RAPIDO | CLIP DE FIXATION | CLIP DE FIXATION | Mundstück Clip |
| 14 | 01050126 | O-RING | O-RING | JOINT TORIQUE | JOINT TORIQUE | O-Ring |
| 15 | 11500011 | FLOW VANE | DEFLETTORE | CORRECT. VENTURI | CORRECT. VENTURI | Regulierschraube |
| 16 | 11500012 | DIAPHRAGM ASSY | MEMBRANA COMPL. | MEMBRANE COMPL. | MEMBRANE COMPL. | Membrane Komplett |
| 17 | 11500035 | WASHER, ANTI-FRICTION | ANELLO MEMBRANA | RONDELLE MEMBRANE | RONDELLE MEMBRANE | Sicherungsscheibe |
| 18 | 11600036 | PURGE COVER | CALOTTA | COUVERCLE | COUVERCLE | Schutz |
| 19 | 11600037 | RING | GHIERA | BAGUE DE SERRAGE | BAGUE DE SERRAGE | Haltering |
| 20 | 11500109 | ORIFICE | ORIFIZIO | ORIFICE | ORIFICE | Ventilstitz |
| 21 | 01050160 | O-RING | O-RING | JOINT TORIQUE | JOINT TORIQUE | O-Ring |
| 22 | 11600022 | HOUSING | SEDE | LOGEMENT | LOGEMENT | Gehäuse-welle |
| 23 | 11600038 | FRAME | MASCHERINA | ENJOLIVEUR | ENJOLIVEUR | Rahmen |
| 24 | 11600141 | LEVER | LEVA | LEVIER | LEVIER | Kipphebel |
| 25 | 11250221 | SEAT | VALVOLA | GLAPET | GLAPET | Ventil |
| 26 | 11250220 | POPPET | PISTONCINO | POUPEE | POUPEE | Ventilträger |
| 27 | 01050363 | O-RING | O-RING | JOINT TORIQUE | JOINT TORIQUE | O-Ring |
| 28 | 11250015 | POPPET ASSY | ASS. PISTONCINO | POUPEE ASSEMBLEE | POUPEE ASSEMBLEE | Ventilträger Komplett |
| 29 | 01020216 | SPRING | MOLLA | RESSORT | RESSORT | Feder |
| 30 | 11600029 | SPRING PAD | ANELLO MOLLA | CALE DE RESSORT | CALE DE RESSORT | Federführung |
| 31 | 11500031 | RETAINING CLIP KNOB | ARRESTO POMOLO | CLIP DE RETENUE | CLIP DE RETENUE | Sicherungsring |
| 32 | 11500009 | KNOB | POMOLO | MOLETTE REGLAGE | MOLETTE REGLAGE | Einstellschraube |
| 33 | 01050138 | O-RING | O-RING | JOINT TORIQUE | JOINT TORIQUE | O-Ring |
| 34 | 11600009 | BALANCE CHAMBER | CAMERA BILANC. | CHAMBRE COMP. | CHAMBRE COMP. | Balance-Kammer |
| 35 | 01050360 | O-RING | O-RING | JOINT TORIQUE | JOINT TORIQUE | O-Ring |
| 36 | 11600010 | PISTON, BAL. CHAMB. | PISTONE CAMERA | CHAMBRE COMP. MOBILE | CHAMBRE COMP. MOBILE | Verstellkammer |
| 37 | 01050145 | O-RING | O-RING | JOINT TORIQUE | JOINT TORIQUE | O-Ring |
| 38 | 01050147 | O-RING | O-RING | JOINT TORIQUE | JOINT TORIQUE | O-Ring |
| 39 | 11600005 | PLUG, KNOB | TAPPO POMOLO | BOUCHON MOLETTE | BOUCHON MOLETTE | Verschluss |
| 40 | 01006554 | DECAL, KNOB | DECAL, POMOLO | DECAL MOLETTE | DECAL MOLETTE | Decal |
| 41 | 30012103 | PIN | SPINA | CLAVETTE | CLAVETTE | Sicherstift |
| 42 | 01050347 | O-RING | O-RING | JOINT TORIQUE | JOINT TORIQUE | O-Ring |
| 43 | 11600050 | RING | ANELLO | RONDELLE | RONDELLE | Scheibe |
| 44 | 11600040 | FRAME/RING ASSY | ASSIEME GHIERA | ENJOLIV. COMPL. | ENJOLIV. COMPL. | Rahmen Komplett |



<> Torque N·m ⁺² -0
 [] Torque lb·in ⁺¹⁸ -0
 Annual replacement
 Octopus version

S-600 SECOND STAGE
CAT. NO. 11-600-000
 CONFIG. 1 DATE 04 / 01
 REV. B Pos. 44: Modified a wrong P/N (it was 11600030)

CHECKED