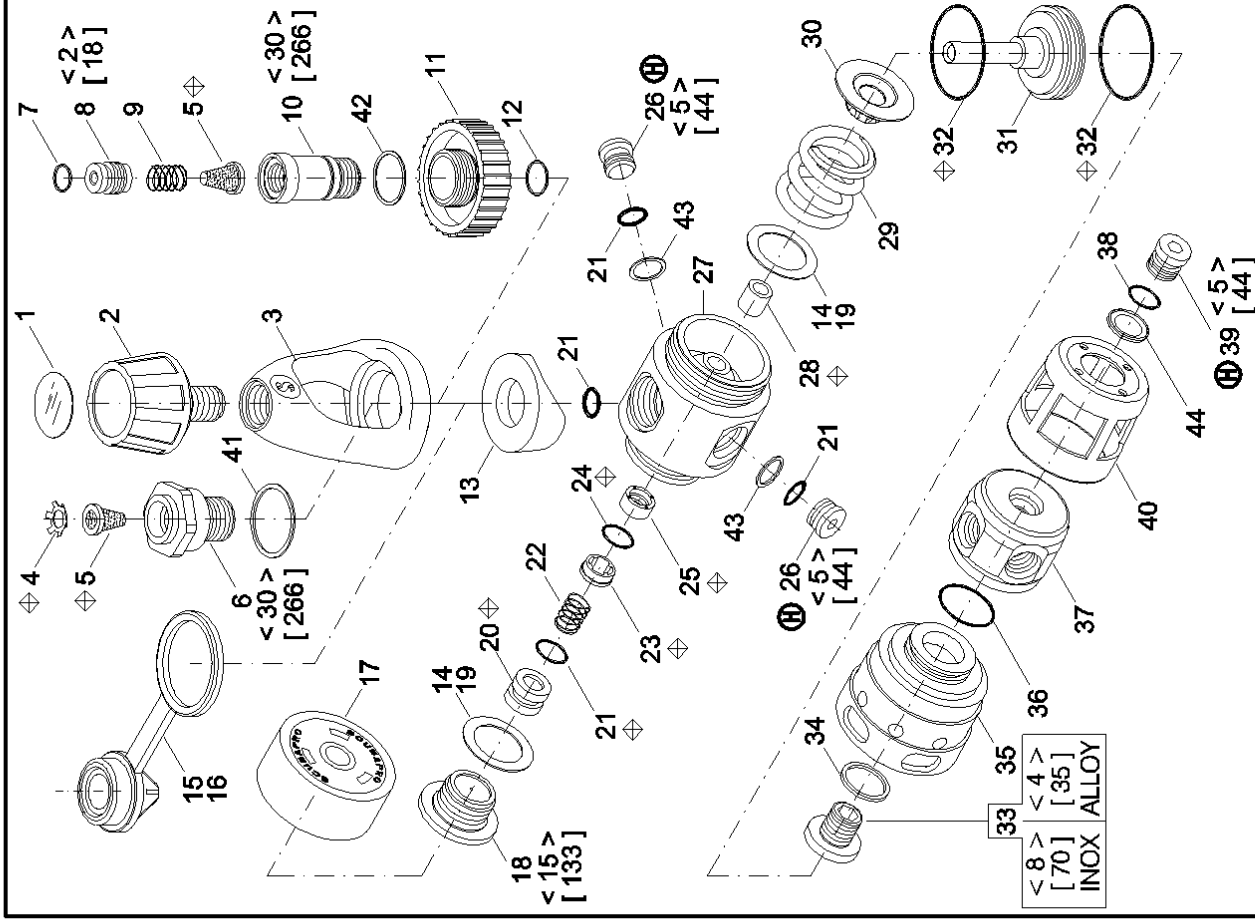


Po.	P/N	DESCRIPTION	DESCRIZIONE	DESCRIPTION	DESCRIZIONE	DESCRIPTION	BEZEICHNUNG
1	01006922	DECAL	DECAL	DECAL	DECAL	DECAL	Decal
2	10200008	YOKE SCREW 9/16"	VOLANTINO 9/16"	VOLANTINO 9/16"	VOLANTINO 9/16"	VIS ETRIER 9/16"	Flugelschraube 9/16
3	10715157	YOKE	STAFFA	STAFFA	STAFFA	ETRIER	AnschluBbugel
4	01073101	RETAINER	FERMA FILTRO	FERMA FILTRO	FERMA FILTRO	CLIP RETEN. FILTRE	Sicherung
5	01028109	FILTER	FILTR	FILTR	FILTR	FILTR	Filter
6	10715105	YOKE RETAINER	BLOCCASTAFFA	BLOCCASTAFFA	BLOCCASTAFFA	RETENUE D'ETRIER	Bugelhalter
7	01050428	O-RING	O-RING	O-RING	O-RING	JOINT TORIQUE	O-ring
8	10715122	FILTER RET. DIN 200	FERMA FILTRO D200	FILTER RET. DIN 200	FERMA FILTRO D200	RET. FILTRE D200	Sicherung DIN 200
**	10715124	FILTER RET. DIN 300	FERMA FILTRO D300	FILTER RET. DIN 300	FERMA FILTRO D300	RET. FILTRE D300	Sicherung DIN 300
9	01020179	SPRING	MOLLA	SPRING	MOLLA	RESSORT	Feder
10	10715121	KNOB RET. DIN 200	FERMO VOL. DIN 200	KNOB RET. DIN 200	FERMO VOL. DIN 200	RET. VOLANT. DIN 200	Sicherung DIN 200
**	10715123	KNOB RET. DIN 300	FERMO VOL. DIN 300	KNOB RET. DIN 300	FERMO VOL. DIN 300	RET. VOLANT. DIN 300	Sicherung DIN 300
11	10105120	KNOB, DIN 200	VOLANTINO DIN 200	KNOB, DIN 200	VOLANTINO DIN 200	VOLANT. DIN 200	AnschluBschraube D200
**	10105122	KNOB, DIN 300	VOLANTINO DIN 300	KNOB, DIN 300	VOLANTINO DIN 300	VOLANT. DIN 300	AnschluBschraube D300
12	01050147	O-RING	O-RING	O-RING	O-RING	JOINT TORIQUE	O-ring
13	10600111	SAADDLE	SELLA	SAADDLE	SELLA	SELLE	Auflagesattel
14	01060220	WASHER	RONDELLA	WASHER	RONDELLA	RONDELLE	Scheibe
15	10101212	INLET PROTECT. INT	TAPPO PROTEZ. INT	INLET PROTECT. INT	TAPPO PROTEZ. INT	PROTEC. ENTREE HP INT	Schutzkugel INT
16	10101211	INLET PROTECT. DIN	TAPPO PROTEZ. DIN	INLET PROTECT. DIN	TAPPO PROTEZ. DIN	PROTEC. ENTREE HP DIN	Schutzkugel DIN
17	10700104	CAP	CAPPUCCIO	CAP	CAPPUCCIO	CAPUCHON	Capuze
18	10715102	SEAT RETAINER	PREMIPASTIGLIA	SEAT RETAINER	PREMIPASTIGLIA	LOGEMENT CLAPET	Sitzhalter
19	01060219	WASHER	RONDELLA	WASHER	RONDELLA	RONDELLE	Scheibe
20	10101161	SEAT	PASTIGLIA	SEAT	PASTIGLIA	CLAPET	Sitz
21	01050138	O-RING	O-RING	O-RING	O-RING	JOINT TORIQUE	O-ring
22	01020700	SPRING	MOLLA	SPRING	MOLLA	RESSORT	Feder
23	10700105	RING	ANELLO	RING	ANELLO	ANNEAU	Ring
24	01050136	O-RING	O-RING	O-RING	O-RING	JOINT TORIQUE	O-ring
25	01060607	HP PLUG	ANELLO	HP PLUG	ANELLO	ANNEAU	Ring
26	10715139	HP PLUG	TAPPO FORO HP	HP PLUG	TAPPO FORO HP	BOUCHON SORT. HP	VerschlussSchraube
27	10715101	BODY	CORPO	BODY	CORPO	CORPS	Block
28	10700401	SLEEVE	TUBETTO	SLEEVE	TUBETTO	CAPUCHON	Soft Rubber
29	01020225	SPRING T.I.S.	MOLLA T.I.S.	SPRING T.I.S.	MOLLA T.I.S.	RESSORT T.I.S.	Feder T.I.S.
30	10600135	BUSHING	BOCCOLA	BUSHING	BOCCOLA	MANCHON	Antifrosting
31	10600155	COMPOS. PISTON	PISTONE COMPOS.	COMPOS. PISTON	PISTONE COMPOS.	PISTON	Kolben
32	01050177	O-RING	O-RING	O-RING	O-RING	JOINT TORIQUE	O-ring
33	10500104	SWIVEL RETAINER	FERMO ANELLO GIR	SWIVEL RETAINER	FERMO ANELLO GIR	VIS RETEN. EMERILLON	Sattelscharube
34	01060500	WASHER	RONDELLA	WASHER	RONDELLA	RONDELLE	Scheibe
35	10715162	CAP	CAPPUCCIO	CAP	CAPPUCCIO	CHAPEAU	Zylinder
36	10105162	O-RING	ANELLO GIREVOLE	O-RING	ANELLO GIREVOLE	JOINT TORIQUE	O-ring
37	10715118	SWIVEL	FERMO ANELLO GIREVOLE	SWIVEL	FERMO ANELLO GIREVOLE	EMERILLON 5 SORT.	Schwenkkopt
38	01050132	O-RING	O-RING	O-RING	O-RING	JOINT TORIQUE	O-ring
39	10715104	PLUG, LP	TAPPO B.P.	PLUG, LP	TAPPO B.P.	BOUCHON M.P.	VerschlussSchraube 3/8"
40	10700108	CAP	CAPPUCCIO MORB.	CAP	CAPPUCCIO MORB.	CAPUCHON	Capuze
41	01060153	WASHER	RONDELLA	WASHER	RONDELLA	RONDELLE	Scheibe
42	01060502	WASHER	RONDELLA	WASHER	RONDELLA	RONDELLE	Scheibe
43	01060608	WASHER	RONDELLA	WASHER	RONDELLA	RONDELLE	Scheibe
44	01060609	WASHER	RONDELLA	WASHER	RONDELLA	RONDELLE	Scheibe



< > Torque N · m ⁺² -₀
 [] Torque lb · in ⁺¹⁸ -₀
 ◆ Annual replacement
 ** DIN 300 BAR

MK20 Ultralight T.I.S.
CAT. NO. 10-715-X00
CONFIG. 10 DATE 09 / 00 1 / 1
REV. H Pos. 26-39 Modified torque, was <4> [35] - Pos. 33 Added torque for INOX one

CHECKED