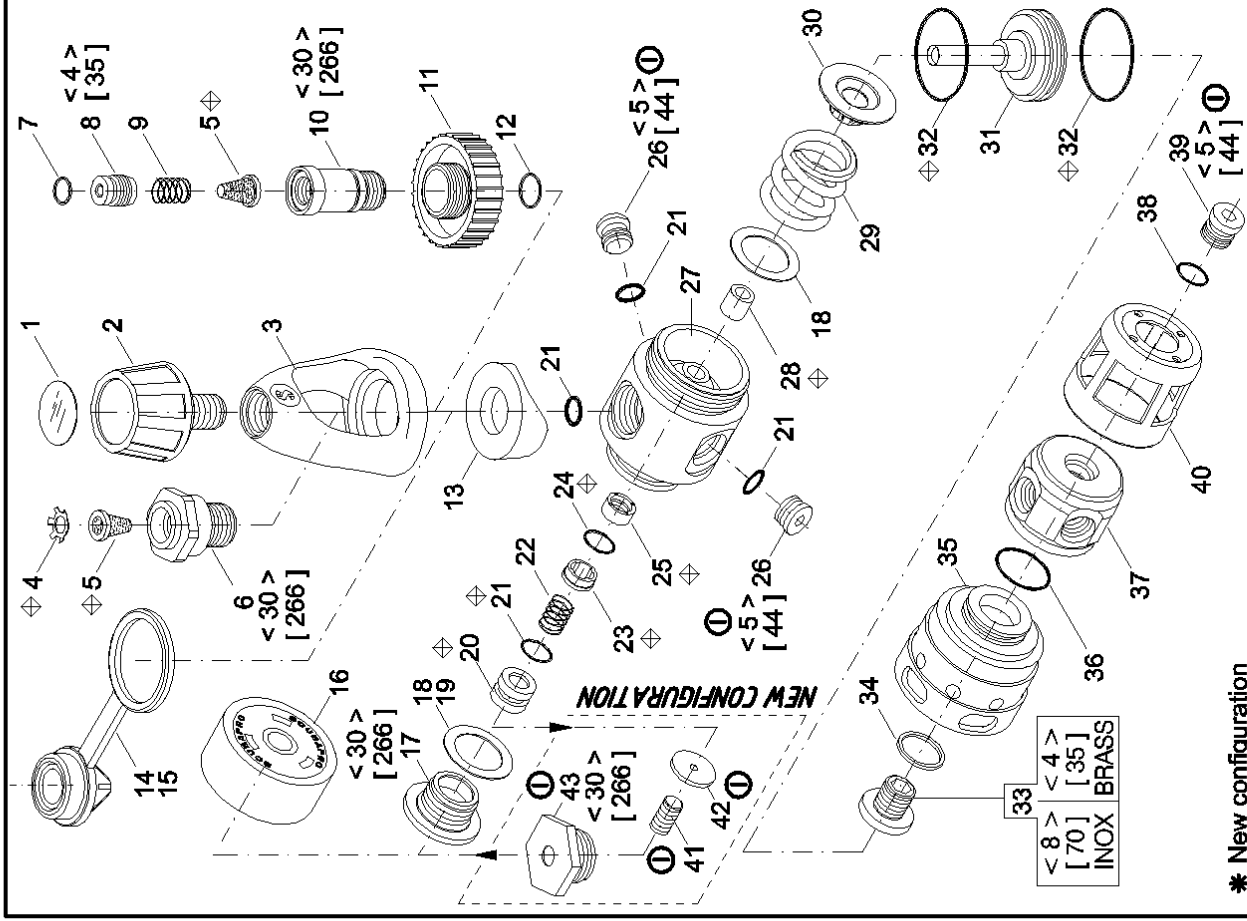


Po.	P/N	DESCRIPTION	DESCRIZIONE	DESCRIPTION	DESCRIZIONE	DESCRIPTION	BEZEICHNUNG
1	01006780	DECAL	DECAL	DECAL	DECAL	DECAL	Decal
2	10200008	YOKE SCREW 9/16"	VOLANTINO 9/16"	VOLANTINO 9/16"	VOLANTINO 9/16"	VIS ETRIER 9/16"	Flugelschraube 9/16
3	10705157	YOKE	STAFFA	STAFFA	STAFFA	ETRIER	AnschluBbuegel
4	01073101	RETAINER	FILTR	FILTR	FILTR	CLIP RETEN. FILTRE	Sicherung
5	01028109	FILTER	FILTR	FILTR	FILTR	FILTR	Filter
6	10103115	YOKE RETAIN. UNIV.	BLOCCASTAFFA UNIVERS	BLOCCASTAFFA UNIV.	BLOCCASTAFFA UNIV.	RETEN. D'ETRIER UNIV.	Buegelhalter
7	01050428	O-RING	O-RING	O-RING	O-RING	JOINT TORIQUE	O-ring
8	10400122	FILTER RET. DIN 200	FERMA FILTRO DIN 200	FILTR RET. DIN 200	FERMA FILTRO DIN 200	RET. FILTRE DIN 200	Sicherung DIN 200
**	10400124	FILTER RET. DIN 300	FERMA FILTRO DIN 300	FILTR RET. DIN 300	FERMA FILTRO DIN 300	RET. FILTRE DIN 300	Sicherung DIN 300
9	01020179	SPRING	MOLLA	SPRING	MOLLA	RESSORT	Feder
10	10400125	KNOB RET. DIN 200	FERMO VOL. DIN 200	KNOB RET. DIN 200	FERMO VOL. DIN 200	RET. VOLANT. DIN 200	Sicherung DIN 200
**	10400126	KNOB RET. DIN 300	FERMO VOL. DIN 300	KNOB RET. DIN 300	FERMO VOL. DIN 300	RET. VOLANT. DIN 300	Sicherung DIN 300
**	10105120	KNOB, DIN 200	VOLANTINO DIN 200	KNOB, DIN 200	VOLANTINO DIN 200	VOLANT. DIN 200	AnschluBschraube D200
**	10105122	KNOB, DIN 300	VOLANTINO DIN 300	KNOB, DIN 300	VOLANTINO DIN 300	VOLANT. DIN 300	AnschluBschraube D300
12	01050347	O-RING	O-RING	O-RING	O-RING	JOINT TORIQUE	O-ring
13	10600111	SADDLE	SELLA	SADDLE	SELLA	SELLE	Auflagesattel
14	10101212	INLET PROTECTOR INT	TAPPO PROTEZIONE INT	INLET PROTECTOR INT	TAPPO PROTEZIONE INT	PROTECT. ENTREE HP INT	Schutzkugel INT
15	10101211	INLET PROTECTOR DIN	TAPPO PROTEZIONE DIN	INLET PROTECTOR DIN	TAPPO PROTEZIONE DIN	PROTECT. ENTREE HP DIN	Schutzkugel DIN
16	10700104	CAP	CAPPUCCHIO MORBIDO	CAP	CAPPUCCHIO MORBIDO	CAPUCHON	Capuze
17	10700102	SEAT RETAINER	PREMIPASTIGLIA	SEAT RETAINER	PREMIPASTIGLIA	LOGEMENT CLAPET	Sitzhalter
18	01060219	WASHER	RONDELLA	WASHER	RONDELLA	RONDELLE	Scheibe
19	01060220	WASHER	RONDELLA	WASHER	RONDELLA	RONDELLE	Scheibe
20	10101181	SEAT	PASTIGLIA	SEAT	PASTIGLIA	CLAPET	Slitz
21	01050138	O-RING	O-RING	O-RING	O-RING	JOINT TORIQUE	O-ring
22	01020700	SPRING	MOLLA	SPRING	MOLLA	RESSORT	Feder
23	10700105	RING	ANELLO	RING	ANELLO	ANNEAU	Ring
24	01050138	O-RING	O-RING	O-RING	O-RING	JOINT TORIQUE	O-ring
25	01060607	RING	ANELLO	RING	ANELLO	ANNEAU	Ring
26	10101139	PLUG 7/16"	TAPPO FORO HP	PLUG 7/16"	TAPPO FORO HP	BOUCHON SORT. HP	VerschlussBeschraube
27	10700101	BODY	CORPO	BODY	CORPO	CORPS	Block
28	10700401	SLEEVE	TUBETTO	SLEEVE	TUBETTO	CAPUCHON	Soft Rubber
29	01020225	SPRING T.I.S.	MOLLA T.I.S.	SPRING T.I.S.	MOLLA T.I.S.	RESSORT T.I.S.	Feder T.I.S.
30	10600135	BUSHING	BOCCOLA	BUSHING	BOCCOLA	MANCHON	Antifrosting
31	10600155	COMPOS. PISTON	PISTONE COMPOSITO	COMPOS. PISTON	PISTONE COMPOSITO	PISTON	Kolben
32	01050177	O-RING	O-RING	O-RING	O-RING	JOINT TORIQUE	O-ring
33	10500104	SWIVEL RETAINER	FERMO ANELLO GIREV.	SWIVEL RETAINER	FERMO ANELLO GIREV.	VIS RETEN. EMERILLON	Sattelschraube
34	01060500	WASHER	RONDELLA	WASHER	RONDELLA	RONDELLE	Scheibe
35	10600102	CAP	CAPPUCCIO	CAP	CAPPUCCIO	CHAPEAU	Zylinder
36	01050182	O-RING	O-RING	O-RING	O-RING	JOINT TORIQUE	O-ring
37	10600118	SWIVEL	ANELLO GIREVOLE	SWIVEL	ANELLO GIREVOLE	EMERILLON 5 SORT.	Schwenkkopf
38	01050132	O-RING	O-RING	O-RING	O-RING	JOINT TORIQUE	O-ring
39	10101104	PLUG, LP	TAPPO B.P.	PLUG, LP	TAPPO B.P.	BOUCHON M.P.	VerschlussBeschraube 3/8"
40	10700108	CAP	CAPPUCCHIO ANTIURTO	CAP	CAPPUCCHIO ANTIURTO	CAPUCHON	Capuze
#41	01102104	ADJUST. SCREW	GRANO M8	ADJUST. SCREW	GRANO M8	VIS REGLAGE	
#42	10752102	SPACER	SPAZIATORE	SPACER	SPAZIATORE		
#43	10700103	SEAT RETAINER	PREMIPASTIGLIA	SEAT RETAINER	PREMIPASTIGLIA	LOGEMENT CLAPET	Sitzhalter



* New configuration	
<>	Torque N · m <sup>+6</sup> <sub>-0</sub>
[ ]	Torque lb · in <sup>+18</sup> <sub>-0</sub>
◇	Annual replacement
**	DIN 300 BAR
MK20 T.I.S.	
CAT. NO. 10-70X-000	
CONFIG. 10	DATE 01/02 1 / 1
REV. I	Pos. 25 and 38: Added torque values - Added new configuration: pos. 40, 41, 42
CHECKED	