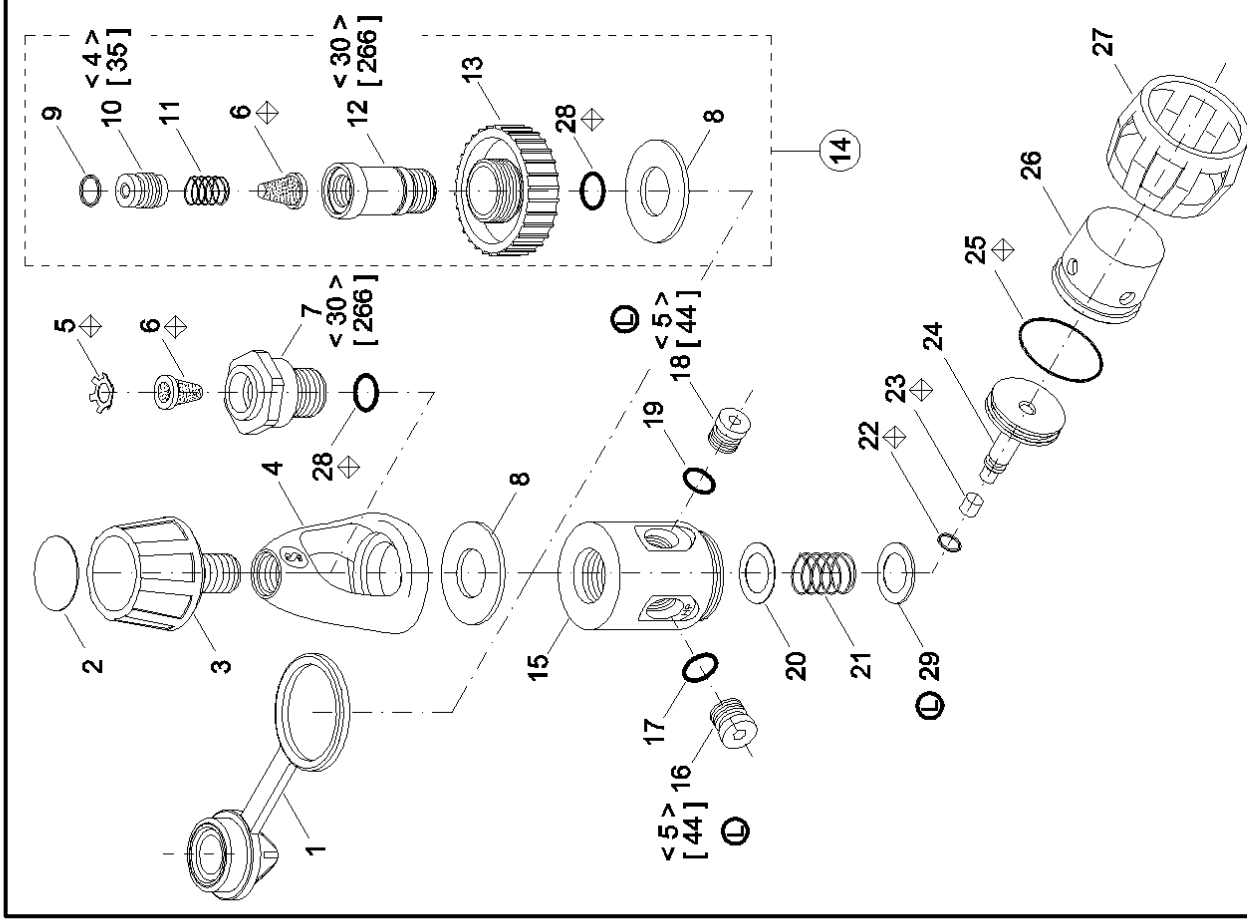


Po.	P/N	DESCRIPTION	DESCRIZIONE	DESCRIPTION	DESCRIZIONE	DESCRIPTION	BEZEICHNUNG
1	10101211	INLET PROTECT. DIN	TAPPO PROTEZ. DIN	PROT. ENTREE HP DIN	PROT. ENTREE HP DIN	Schutzkugel DIN	
1	10101212	INLET PROTECT. INT	TAPPO PROTEZ. INT	PROT. ENTREE HP INT	PROT. ENTREE HP INT	Schutzkugel INT	
2	01006041	DECAL	DECAL	DECAL	DECAL	Decal	
3	10200008	YOKE SCREW	VOLANTINO	VIS ETRIER	VIS ETRIER	Flugelschraube	
4	10705157	YOKE	STAFFA	ETRIER	ETRIER	Anschlussbugel	
5	01073101	RETAINER	FERMA FILTRO	RETEN. FILTRE	RETEN. FILTRE	Sicherung	
6	01028109	FILTER	FILTRO	FILTRE	FILTRE	Filter	
7	10103115	YOKE RET. UNIV.	BLOCCA STAFFA	RET. ETRIER UNIV.	RET. ETRIER UNIV.	Bugelhalter	
8	10044021	SPACER	SPAZIATORE	RONDELLE	RONDELLE	Scheibe	
9	01050428	O-RING	O-RING	JOINT TORIQUE	JOINT TORIQUE	O-ring	
10	10400122	FILTER RET. 200B	FERMA FILTRO 200B	RET. FILTRE 200B	RET. FILTRE 200B	Sicherung 200B	
**	10400124	FILTER RET. 300B	FERMA FILTRO 300B	RET. FILTRE 300B	RET. FILTRE 300B	Sicherung 300B	
11	01020179	SPRING	MOLLA	RESSORT	RESSORT	Feder	
12	10400125	KNOB RET. 200B	FERMO VOL. 200B	RET. VOLANT. 200B	RET. VOLANT. 200B	Anschlusswelle 200B	
**	10400126	KNOB RET. 300B	FERMO VOL. 300B	RET. VOLANT. 300B	RET. VOLANT. 300B	Anschlusswelle 300B	
13	10105120	KNOB 200B	VOLANTINO 200B	VOLANT. 200B	VOLANT. 200B	AnschlußBschrabe 200B	
**	10105122	KNOB 300B	VOLANTINO 300B	VOLANT. 300B	VOLANT. 300B	AnschlußBschrabe 300B	
14	100440X0	KIT CONV. INT/DIN	KIT TRASF. INT/DIN	KIT CONV. INT/DIN	KIT CONV. INT/DIN	Umbaukit INT/DIN	
15	10103210	BODY	CORPO	CORPS	CORPS	Gehäuse	
16	10101139	PLUG HP	TAPPO HP	BOUCHON HP	BOUCHON HP	VerschlussBschrabe HD	
17	01050138	O-RING	O-RING	JOINT TORIQUE	JOINT TORIQUE	O-ring	
18	10101104	PLUG L.P.	TAPPO B.P.	BOUCHON M.P.	BOUCHON M.P.	VerschlussBschrabe ND	
19	01050132	O-RING	O-RING	JOINT TORIQUE	JOINT TORIQUE	O-ring	
20	01060101	WASHER	RONDELLA	RONDELLE	RONDELLE	Scheibe	
21	01020226	SPRING T.I.S.	MOLLA T.I.S.	RESSORT T.I.S.	RESSORT T.I.S.	Feder T.I.S.	
22	01050126	O-RING	O-RING	JOINT TORIQUE	JOINT TORIQUE	O-ring	
23	10102103	SEAT	PASTIGLIA	CLAPET	CLAPET	Teflonsitz	
24	10102102	PISTON	PISTONE	PISTON	PISTON	Kolben	
25	01050177	O-RING	O-RING	JOINT TORIQUE	JOINT TORIQUE	O-ring	
26	10102109	CAP	CAPPUCCIO	CHAPEAU	CHAPEAU	Kappe	
27	10060021	CAP. SOFT	CAPPUCCIO MORB.	CAPUCHON	CAPUCHON	Capuze	
28	01050158	O-RING	O-RING	JOINT TORIQUE	JOINT TORIQUE	O-ring	
29	01060104	WASHER	RONDELLA	RONDELLE	RONDELLE	Scheibe	



MK2 PLUS	
CAT. NO. 10-060-X00	
CONFIG. 10	DATE 02/01
REV. L	Pos. 16-18: added torque value - Modified pos. 29 (was P/N 01-060-104)
1 / 1	CHECKED

<> Torque N · m <sup>+6</sup> -<sub>0</sub>  
 [ ] Torque lb · in <sup>+18</sup> -<sub>0</sub>  
 ◆ Annual replacement  
 \*\* DIN 300 BAR