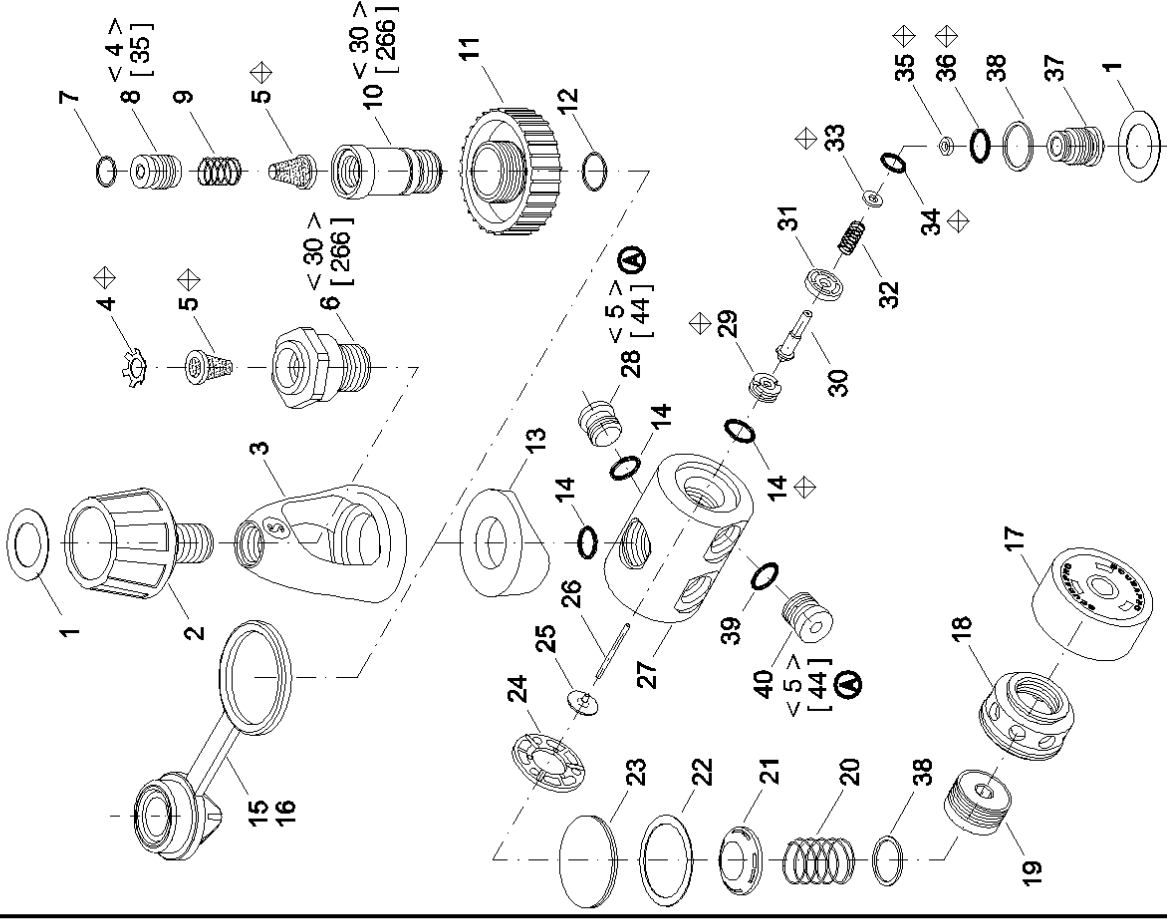


| Po. | P/N      | DESCRIPTION        | DESCRIZIONE       | DESCRIPTION        | DESCRIZIONE       | DESCRIPTION         | BEZEICHNUNG          |
|-----|----------|--------------------|-------------------|--------------------|-------------------|---------------------|----------------------|
| 1   | 01006516 | DECAL              | DECAL             | DECAL              | DECAL             | DECAL               | Decal                |
| 2   | 10200008 | YOKE SCREW         | VOLANTINO         | VOLANTINO          | VOLANTINO         | VIS ETRIER          | Flugelschraube       |
| 3   | 10705157 | YOKE 9/16"         | STAFFA 9/16"      | STAFFA 9/16"       | STAFFA 9/16"      | ETRIER 9/16"        | Anschlußbügel        |
| 4   | 01073101 | RETAINER           | FERMA FILTRO      | FERMA FILTRO       | FERMA FILTRO      | CLIP RETEN. FILTRE  | Sicherung            |
| 5   | 01028109 | FILTER             | FILTRÒ            | FILTRÒ             | FILTRÒ            | FILTRÒ              | Filter               |
| 6   | 10103115 | YOKE RETAIN.       | BLOCCASTAFFA      | BLOCCASTAFFA       | BLOCCASTAFFA      | RETEN. D'ETRIER     | Bügelhalter          |
| 7   | 01050428 | O-RING             | O-RING            | O-RING             | O-RING            | JOINT TORIQUE       | O-ring               |
| 8   | 10400122 | FILTER RET. 200B   | FERMA FILTRO 200B | FILTRÒ RET. 200B   | FERMA FILTRO 200B | RET. FILTRÒ 200B    | Sicherung 200B       |
| **  | 10400124 | FILTER RET. 300B   | FERMA FILTRO 300B | FILTRÒ RET. 300B   | FERMA FILTRO 300B | RET. FILTRÒ 300B    | Sicherung 300B       |
| 9   | 01020179 | SPRING             | MOLLA             | SPRING             | MOLLA             | RESSORT             | Feder                |
| 10  | 10400125 | NOB RET. 200B      | FERMO VOL. 200B   | NOB RET. 200B      | FERMO VOL. 200B   | RET.VOLANT. 200B    | Sicherung 200B       |
| **  | 10400126 | NOB RET. 300B      | FERMO VOL. 300B   | NOB RET. 300B      | FERMO VOL. 300B   | RET.VOLANT. 300B    | Sicherung 300B       |
| 11  | 10105120 | NOB, 200B          | VOLANTINO 200B    | NOB, 200B          | VOLANTINO 200B    | VOLANT. 200B        | Anschlußschraube 200 |
| **  | 10105122 | NOB, 300B          | VOLANTINO 300B    | NOB, 300B          | VOLANTINO 300B    | VOLANT. 300B        | Anschlußschraube 300 |
| 12  | 01050347 | O-RING             | O-RING            | O-RING             | O-RING            | JOINT TORIQUE       | O-ring               |
| 13  | 10600111 | SADDLE             | SELLA             | SADDLE             | SELLA             | SELLE               | Auflagesattel        |
| 14  | 01050138 | O-RING             | O-RING            | O-RING             | O-RING            | JOINT TORIQUE       | O-ring               |
| 15  | 10101212 | INLET PROTECT. INT | TAPPO PROTEZ. INT | INLET PROTECT. INT | TAPPO PROTEZ. INT | PROT. ENTREE HP INT | Schutzkugel INT      |
| 16  | 10101211 | INLET PROTECT. DIN | TAPPO PROTEZ. DIN | INLET PROTECT. DIN | TAPPO PROTEZ. DIN | PROT. ENTREE HP DIN | Schutzkugel DIN      |
| 17  | 10705104 | CAP                | CAPPUCCIO         | CAP                | CAPPUCCIO         | CAPUCHON            | Capuze               |
| 18  | 10705109 | DIAPHR. HOLDER     | CAPPUCCIO MEMBR.  | DIAPHR. HOLDER     | CAPPUCCIO MEMBR.  | PROTECT. MEMBR.     | Membranschutzkappe   |
| 19  | 10705114 | SPRING SCREW       | GHIERA REGOLAZ.   | SPRING SCREW       | GHIERA REGOLAZ.   | VIS REGL. RESSORT   | Einstellschraube     |
| 20  | 01020209 | SPRING T.I.S.      | MOLLA T.I.S.      | SPRING T.I.S.      | MOLLA T.I.S.      | RESSORT T.I.S.      | Feder T.I.S.         |
| 21  | 10705123 | DIAPHR. DISC       | DISCO MOLLA       | DIAPHR. DISC       | DISCO MOLLA       | DISQUE RESS.        | Membrandruckscheibe  |
| 22  | 10705110 | DIAPHR. RING       | RONDELLA MEMBR.   | DIAPHR. RING       | RONDELLA MEMBR.   | RONDELLE MEMBR.     | Membranhaltering     |
| 23  | 10705119 | DIAPHRAGM          | MEMBRANA          | DIAPHRAGM          | MEMBRANA          | MEMBRANE            | Membrane             |
| 24  | 01025200 | DISC               | DISCO CENTRAT.    | DISC               | DISCO CENTRAT.    | DISQUE              | Scheibe              |
| 25  | 01025201 | INSERT,DISC        | INSERTO DISCO     | INSERT,DISC        | INSERTO DISCO     | SUPPORT             | Kolbenteller         |
| 26  | 10755112 | DIAPHR. PIN        | ASTINA            | DIAPHR. PIN        | ASTINA            | POINTEAU            | Kolbennadel          |
| 27  | 10116101 | BODY               | CORPO             | BODY               | CORPO             | CORPS               | Gehäuse              |
| 28  | 10101139 | PLUG H.P.          | TAPPO H.P.        | PLUG H.P.          | TAPPO H.P.        | BOUCH. SORTIE HP    | Verschlußschraube HD |
| 29  | 10755161 | SEAT               | PASTIGLIA         | SEAT               | PASTIGLIA         | CLAPET              | Sitz                 |
| 30  | 10755105 | H.P. POPPET        | PISTONCINO H.P.   | H.P. POPPET        | PISTONCINO H.P.   | CLAPET H.P.         | Hochdruckkolben      |
| 31  | 10755106 | SLEEVE             | BOCCOLA GUIDA     | SLEEVE             | BOCCOLA GUIDA     | GUIDE               | Sitzhalter           |
| 32  | 01020228 | SPRING             | MOLLA             | SPRING             | MOLLA             | RESSORT             | Feder                |
| 33  | 01060107 | WASHER             | RONDELLA          | WASHER             | RONDELLA          | RONDELLE            | Scheibe              |
| 34  | 01050117 | O-RING             | O-RING            | O-RING             | O-RING            | JOINT TORIQUE       | O-ring               |
| 35  | 10755104 | RING               | BOCCOLA O-RING    | RING               | BOCCOLA O-RING    | ANNEAU JOINT TOR.   | Ring                 |
| 36  | 01050145 | O-RING             | O-RING            | O-RING             | O-RING            | JOINT TORIQUE       | O-ring               |
| 37  | 10756102 | BAL. CHAMBER       | CAMERA BILANC.    | BAL. CHAMBER       | CAMERA BILANC.    | CHAMBRE COMP.       | HP Balancekammer     |
| 38  | 01060500 | WASHER             | RONDELLA          | WASHER             | RONDELLA          | RONDELLE            | Scheibe              |
| 39  | 01050132 | O-RING             | O-RING            | O-RING             | O-RING            | JOINT TORIQUE       | O-ring               |
| 40  | 10101104 | PLUG L.P.          | TAPPO B.P.        | PLUG L.P.          | TAPPO B.P.        | BOUCHON M.P.        | Verschlußschraube ND |



|                     |                                  |
|---------------------|----------------------------------|
| MK16 T.I.S.         |                                  |
| CAT. NO. 10-116-X00 |                                  |
| CONFIG. 2           | DATE 09 / 00                     |
| REV. A              | Pos. 28 - 40: Added torque value |
| 1 / 1               |                                  |

< > Torque N · m  $\begin{matrix} +0 \\ -0 \end{matrix}$   
 [ ] Torque lb · in  $\begin{matrix} +18 \\ -0 \end{matrix}$   
 ◊ Annual replacement  
 \*\* DIN 300 BAR

CHECKED